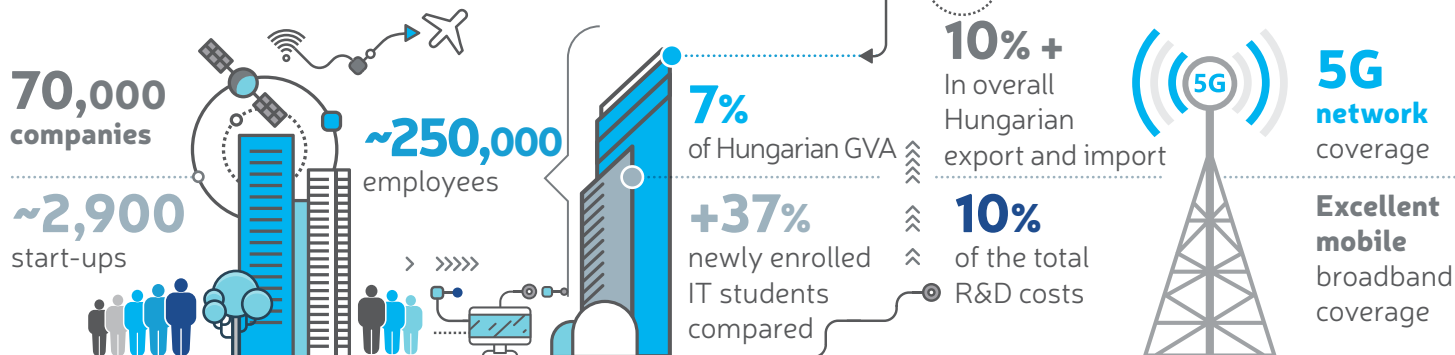


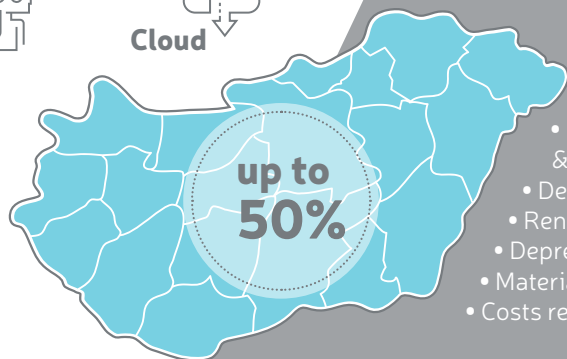
ICT in Hungary



Leading ICT functions



Cloud



State Aid for R&D activity



Eligible costs

- Personnel related costs of the researchers & developers participating in the project
- Depreciation of buildings
- Rental fee of buildings and other structures
- Depreciation of tangible assets & equipment
- Material costs (up to 25% of the total costs)
- Costs related to contract research

Talent pool & education

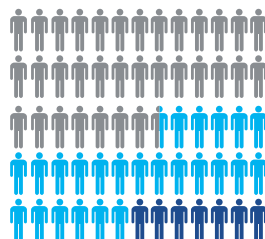


60,833
students in
STEM programs
(BSc level)

+



16,284
students in
STEM programs
(MSc level or above)



28,134

IT university
students

7,739

IT university
final-year
students

+



18,665
Vocational
students
in IT

**Our partners
in stepping into
the future**



cloudera



Diligent

<epam>

ERICSSON

formlabs



GoTo



IBM

Microsoft



NOKIA

ORACLE



SIEMENS



DEUTSCHE TELEKOM IT SOLUTIONS

TATA
CONSULTANCY
SERVICES

ICT start-up success stories



#ITsecurity
#reducedrisk
#privilegedaccounts
#identity
#accessmanagement



#softwareasaservice
#cloudbased
#remoteconnectivity
#collaboration
#ITmanagement
#Customerengagement



#navigationsoftware
#automotive
#enterprise
#wireless
#personal



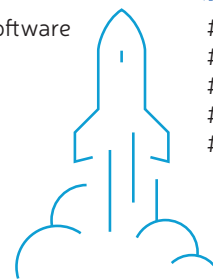
Prezi

#webbased
#presentation
#innovative
#softwareresolution
#worldclass

IBM
Budapest Lab

USTREAM

#onlinevideo
#streaming
#livebroadcast
#interactive
#50millionusers



The Hungarian Investment Promotion Agency offers one-stop-shop management consultancy services providing tailor-made information packages and incentives for companies interested in investing in Hungary.



Location selection

Access to information on investment sites, labour market, taxation, business environment, local suppliers and more.



Incentives

First-hand information on the full range of incentives, end-to-end management of the VIP cash subsidy system.



Business development

Identification and development of local suppliers, mediation between business and government, policy proposals to improve the business environment.

Contact us

HIPA
ict@hipa.hu